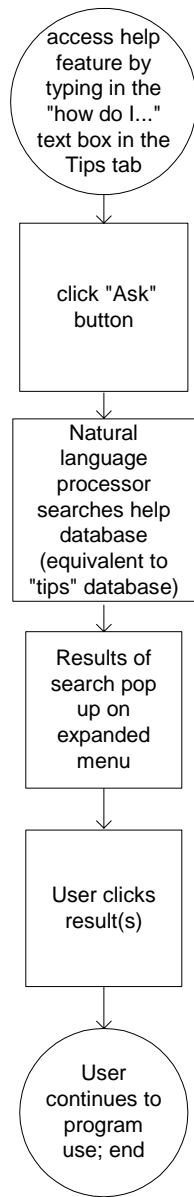


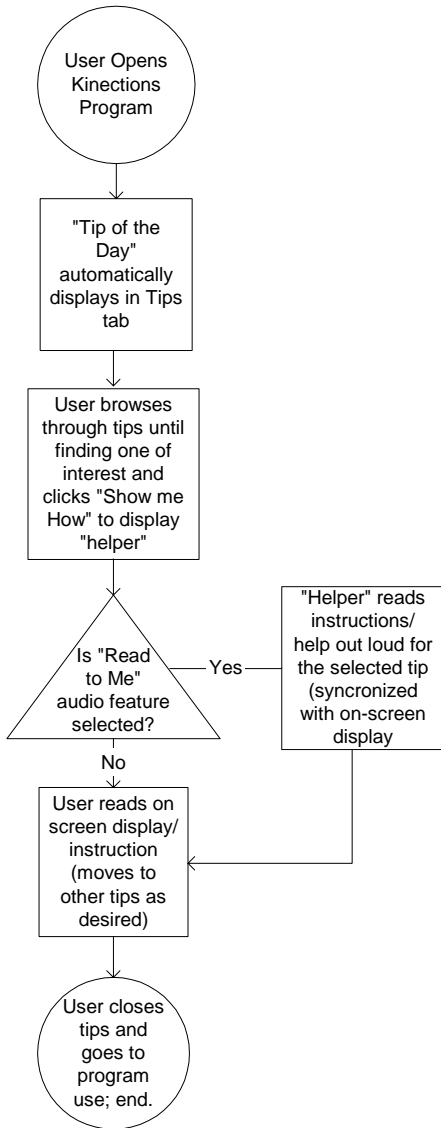
## Help Feature Flow



### Notes:

"How do I..." is always present on the Tips tab

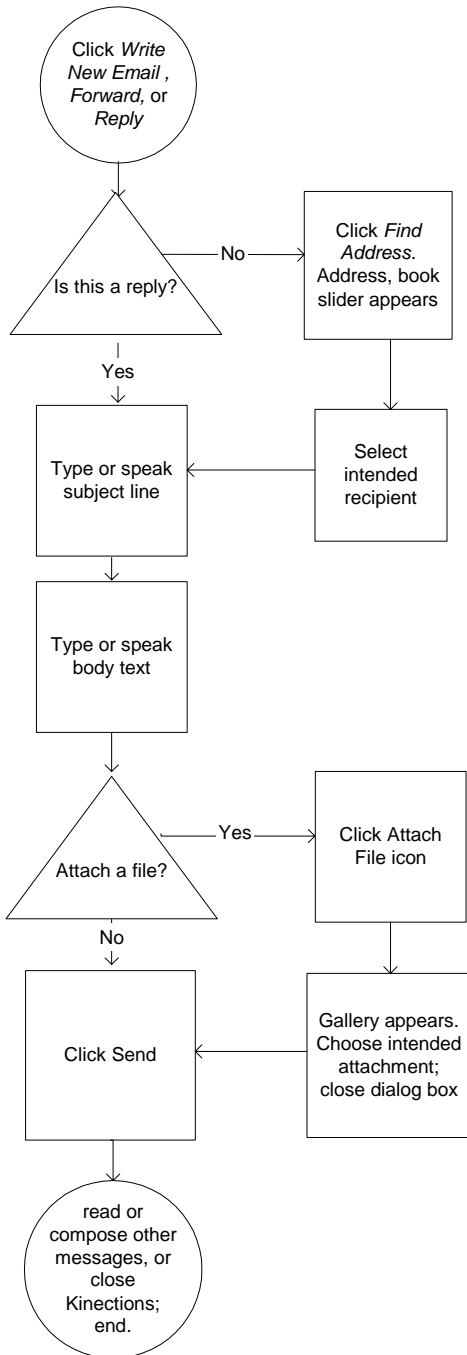
### Tip of the Day Flow



**Notes:**

Tip of the day depends on users skill level with Kinectons (as measured by types of tasks the user is already able to do)

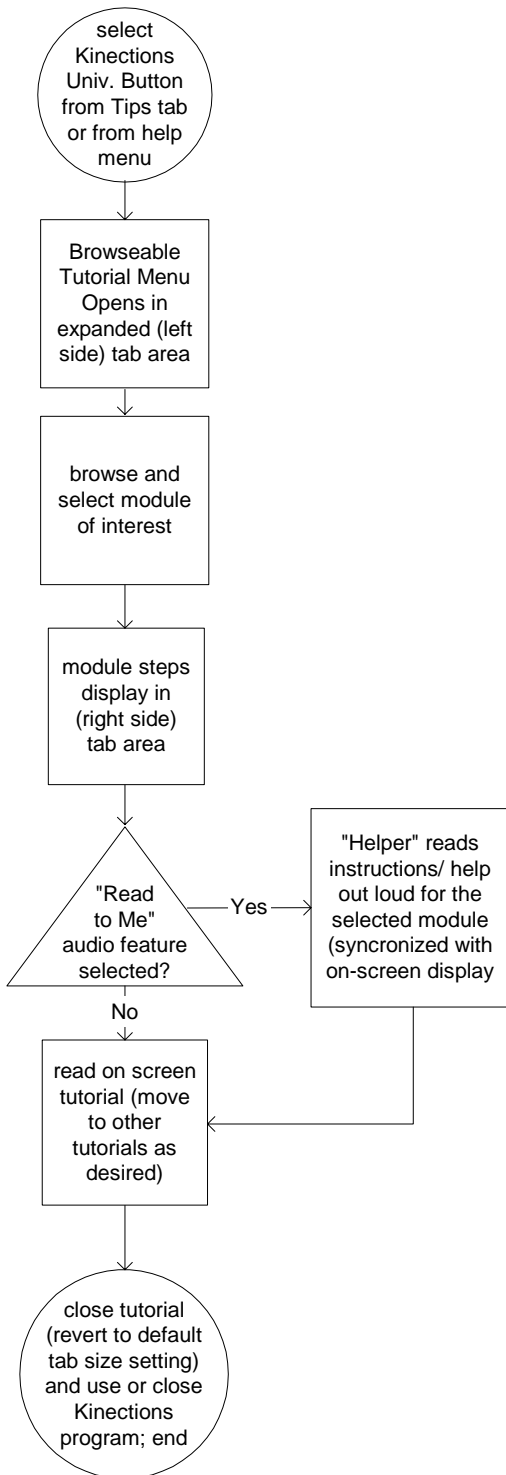
## Outgoing Email



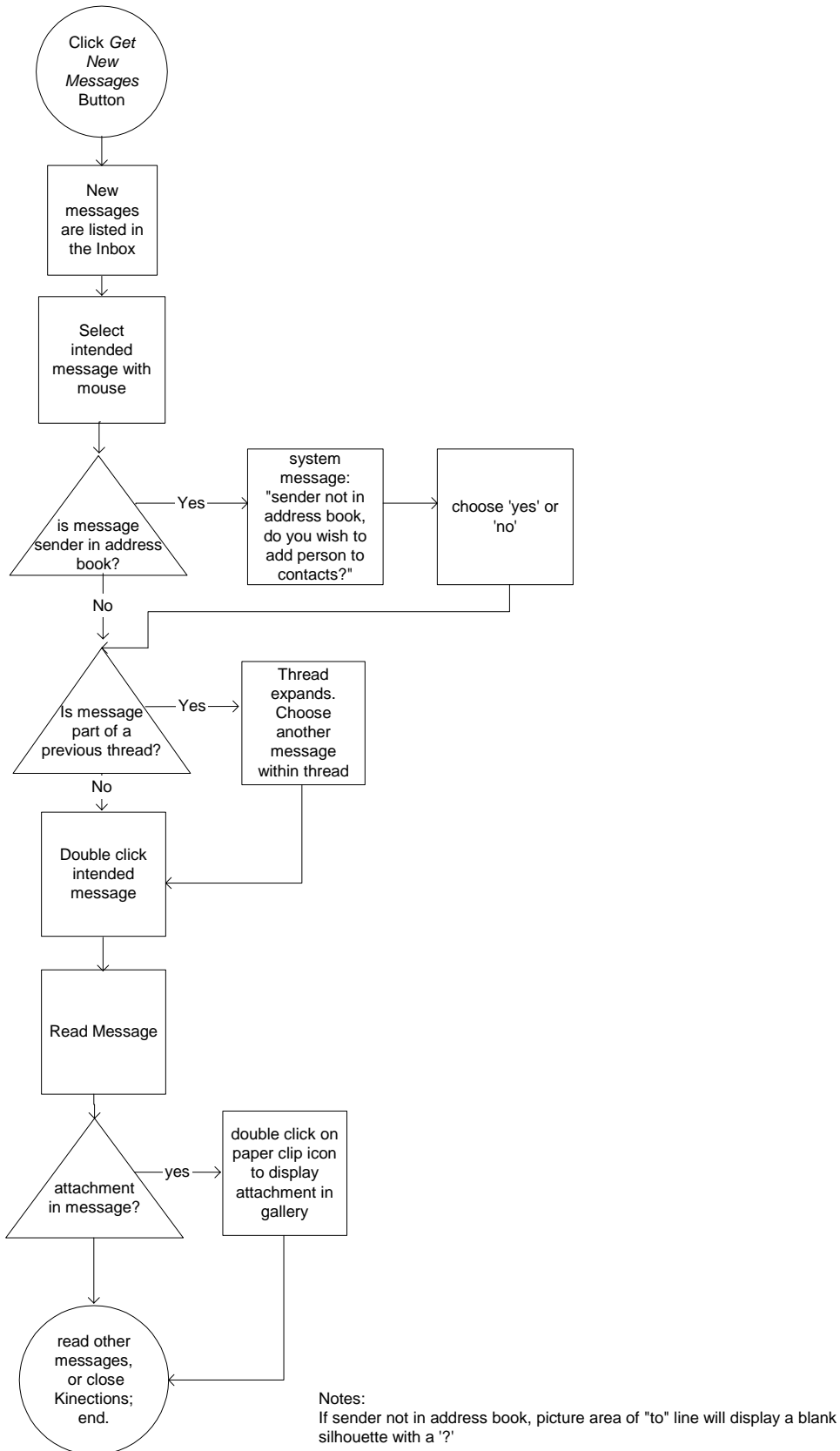
### Notes:

User can speak message parts (subject, body) by activating the voice recognition feature in Kinections.

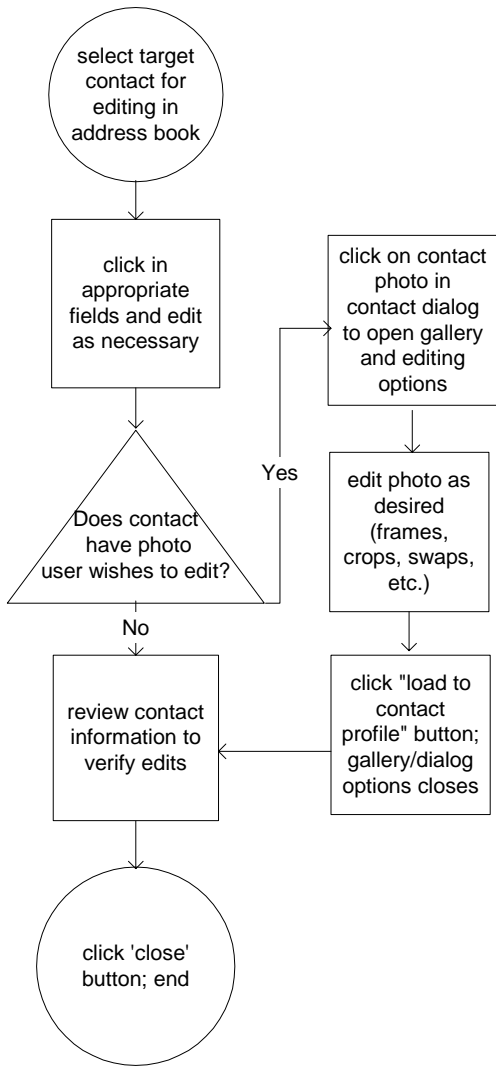
### Kinections University Flow



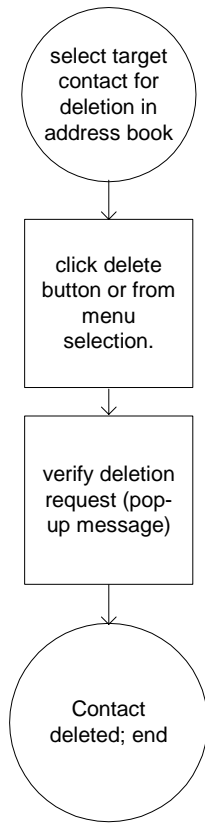
### Incoming Email



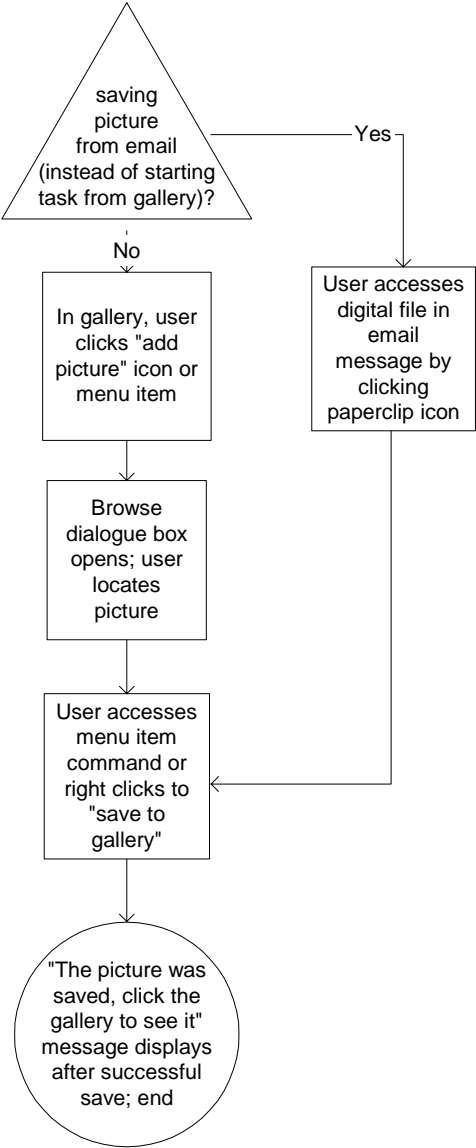
### Edit Address Book Contact



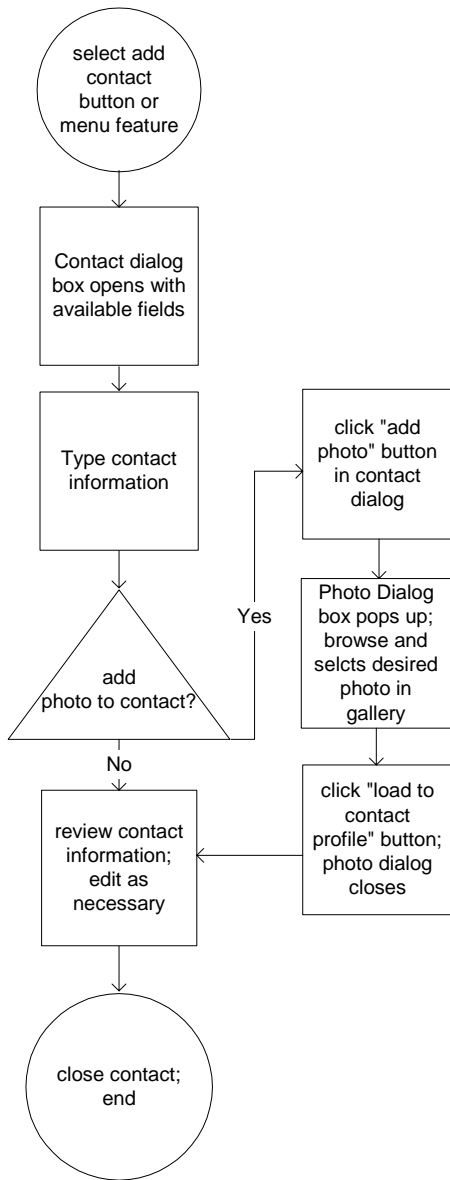
### Delete Address Book Contact



**Gallery Management: Adding/Saving a Picture**



### Add Contact to Address Book



#### Notes:

User can also add contact directly from email message; flow covered in 'incoming email' diagram